



TANGO Technologies Corp.

Upgrading GCS MedOffice to Version15

[www.gcshealth.com](http://www.gcshealth.com)

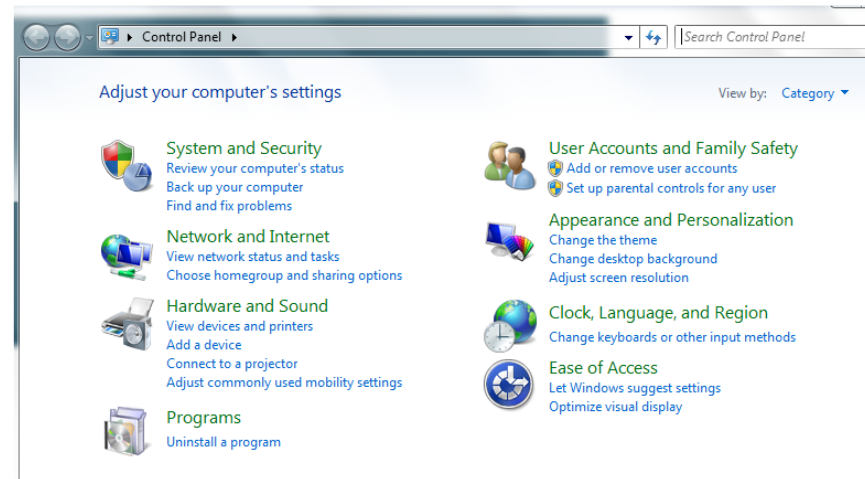
---

# **GCS Health**

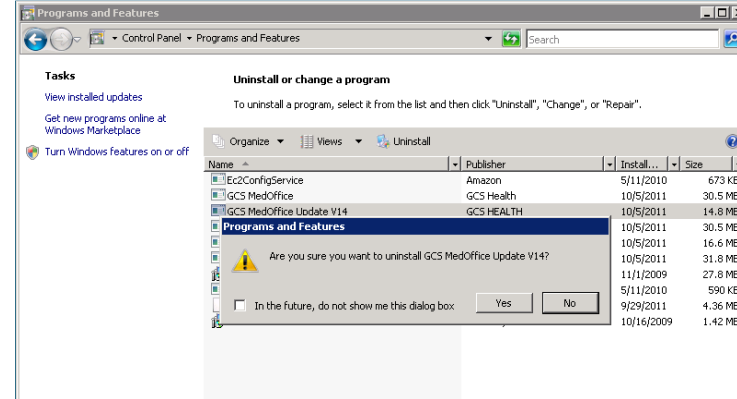
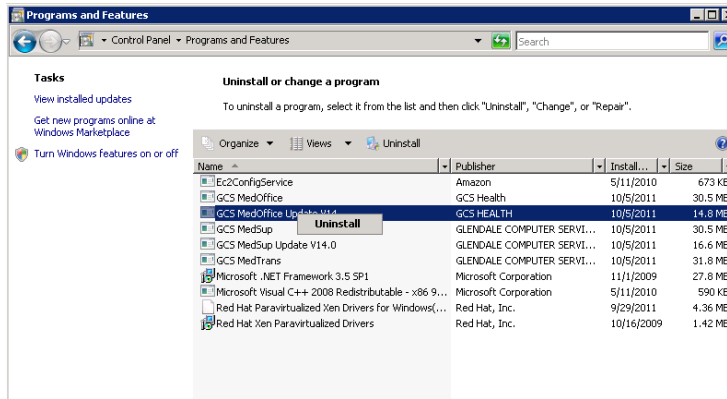
## **Upgrading GCS MedOffice to Version15**

**October 6, 2011**

Uninstall any previous update programs. To uninstall any previous GCS update programs, go to Start Menu → Control Panel. Now select the program that allows you to uninstall programs as shown below.

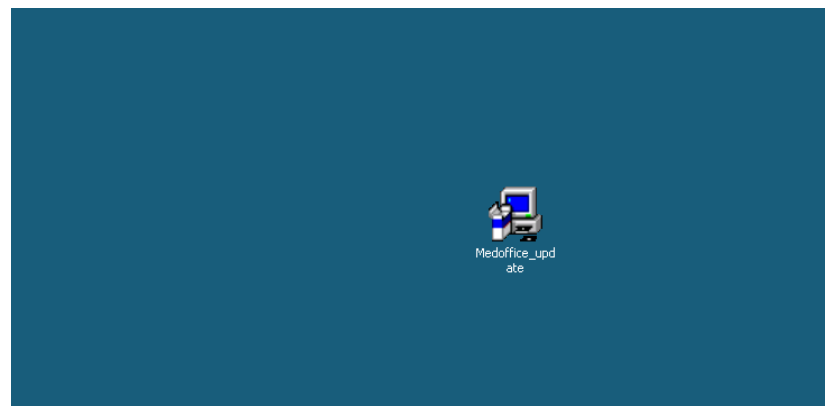


This will show you all the programs that are installed on your computer. Look for any GCS MedOffice Update programs. If you find one, right click on it and select **Uninstall**. This will begin the uninstallation of the previous version.

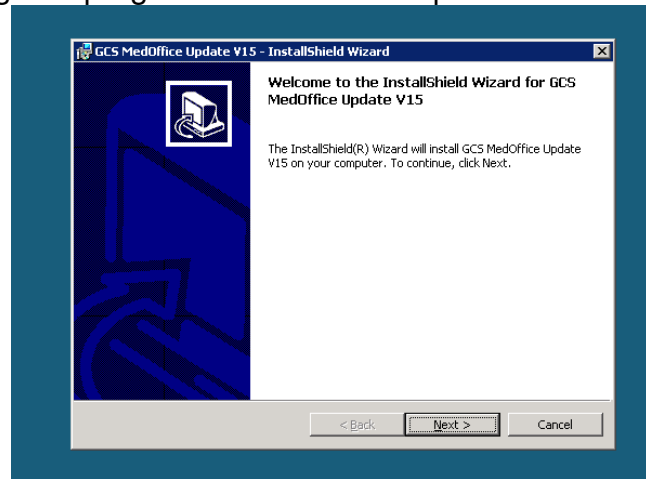


When prompted to uninstall, click on Yes. This will uninstall the program from your computer. Now you are ready to install the new upgrade program for version 15 of GCS MedOffice.

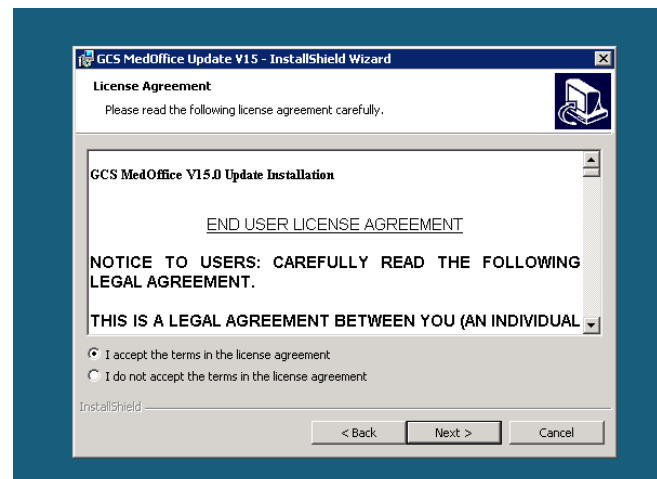
Now download the GCS MedOffice v15 upgrade program to C:\. It will look as shown below. Double-click on this program. This will start the installation of the upgrade program.



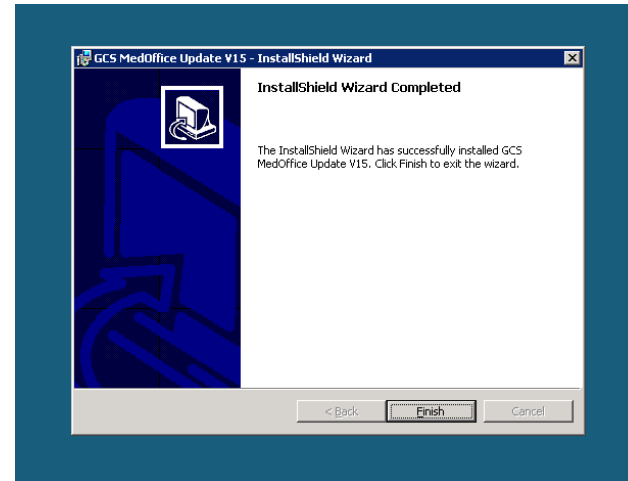
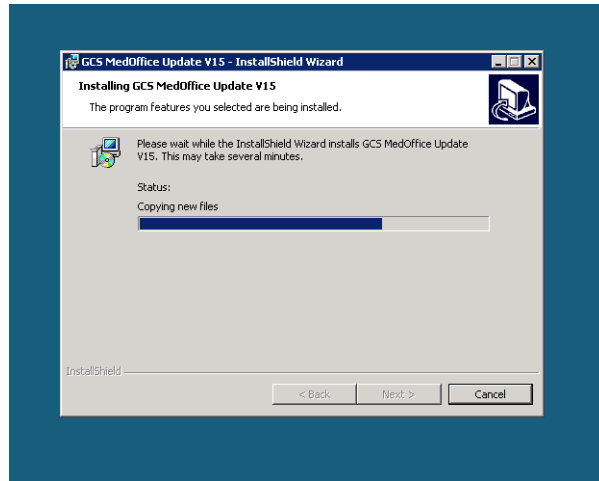
Follow the instructions and let the upgrade program installation complete. On this screen, click on Next.



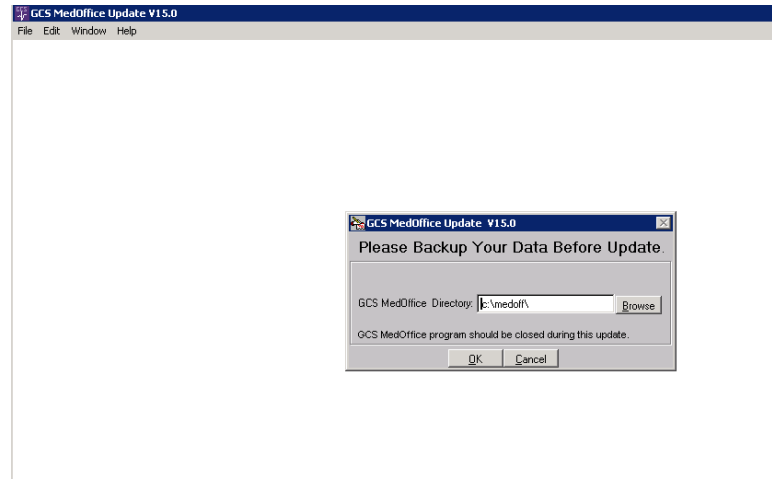
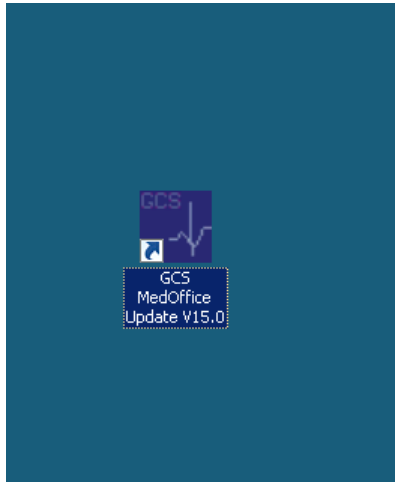
Now you will see the GCS Health license agreement for CGS MedOffice upgrade. Please review the license agreement and if you agree to the terms and conditions mentioned in it, accept it by selecting '**I accept the terms in the license agreement**' and click on **Next**.



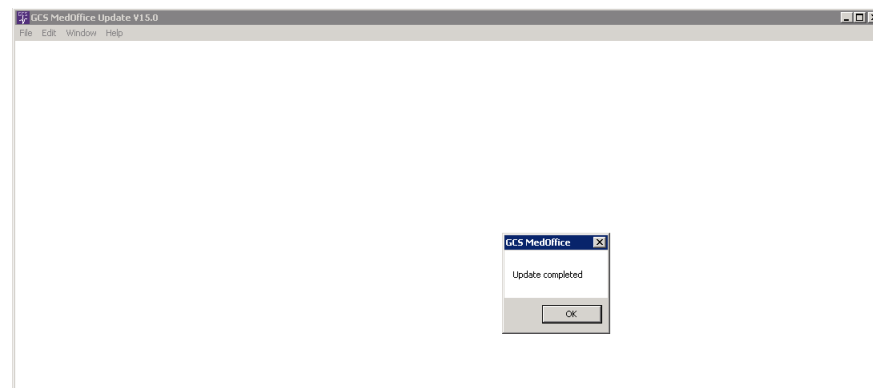
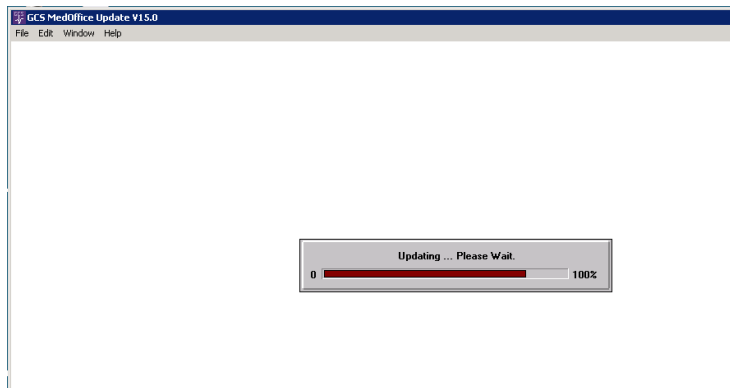
The installation will begin at this point. Once it is done, the **Finish** button will be enabled. Click on **Finish**.



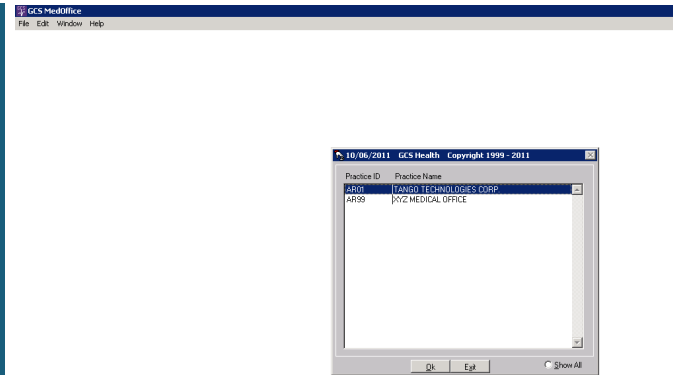
The installation will create a shortcut on your desktop titled **GCS MedOffice Update v15.1**. Double click on this shortcut. This program will now upgrade your GCS MedOffice to v15.



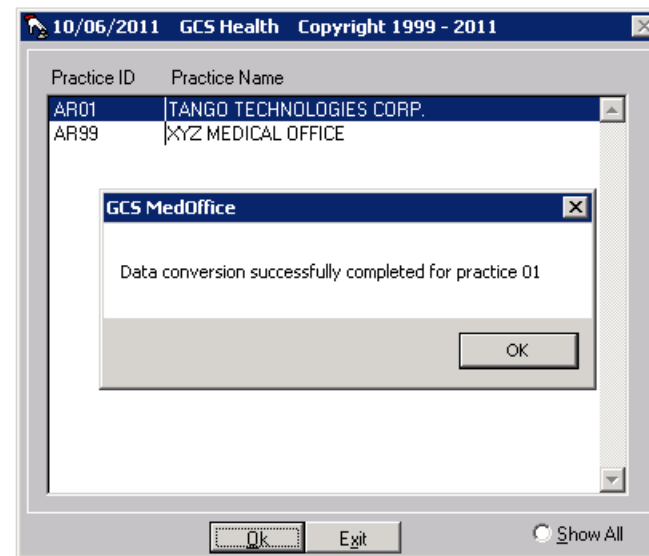
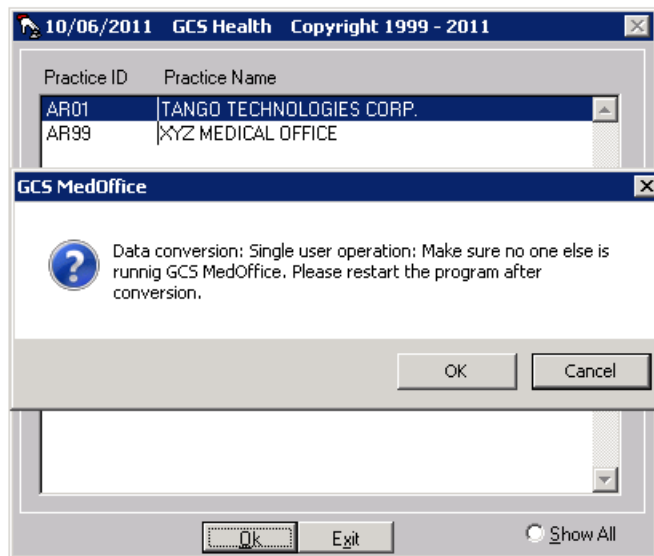
Allow the upgrade to complete. Once it is done, you will see a dialog box indicating that it is complete. Now click on the **OK** button.



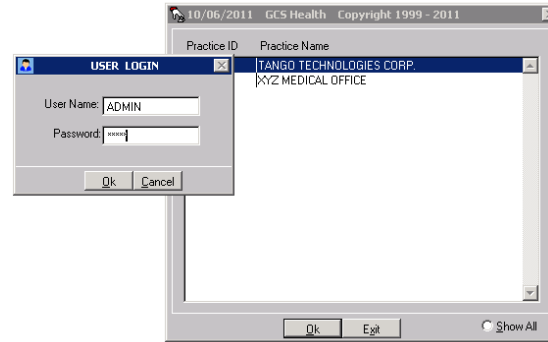
Now double click on the **GCS MedOffice** shortcut which will start MedOffice program. Select a company from the list.



Now the program recognizes that a new version has been installed. So, it will convert the data from the old version to version 15. For this purpose ensure that there is only one user running the program at this time. Click on the **OK** button.



After the data has been converted, log into the company using a User Name and Password.



Now go to the **Help** menu option and select **About**. You should see that Version number is set to 15.1. This confirms that the upgrade has been completed.



For more information, please contact GCS Health at 866-427-1001.